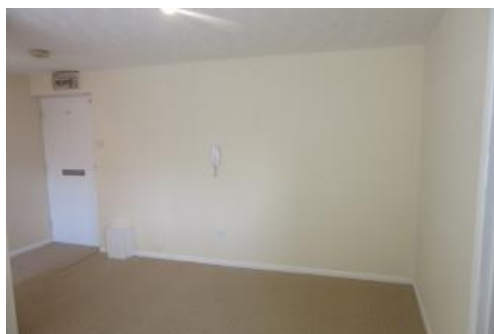


Honey Close, Dagenham, RM10 8TF Dagenham U.K



Quick Summary

Price	Property Type	Status	Area
£200,000	Apartment	For Sale	350 m ²

Beds	Baths	Garages	Rating
1	1	0	4

Property Description

We are pleased to offer this well-presented one-bedroom ground-floor flat, perfect for first-time buyers, cash buyers or investors. The property features a bright and spacious reception room, ideal for relaxing or entertaining, along with a separate fitted kitchen for added convenience. The modern bathroom includes a WC, and the flat benefits from double glazing throughout for comfort.

The flat also includes communal parking and secure entry, ensuring convenience and security. Located within close proximity to Dagenham East Station (District Line), you'll have direct access into Central London, making commuting easy. The surrounding area offers various parks and green spaces, perfect for leisurely walks and outdoor activities.

Local shops, cafes, and essential amenities are all within easy reach, making this well-connected location even more appealing.

This ground-floor gem offers an excellent opportunity to own a home in a sought-after location at an affordable price—don't miss out

Disclaimer: The above measurements are approximate and no responsibility is taken for any error, omission or misstatement. These measurements are for representation purposes only.

Property Features

- Communal parking
- Ground floor
- Perfect for investors and first time buyers
- Semi rural location
- Close proximity to Dagenham East Station (District Line)
- Separate fitted kitchen
- Entry system
- Excellent transport links

Contact Agent

	Name	Phone No.	Email
	Sleek Estates	020 7193 1222	info@sleek.direct