



Ventilation & Renewables

Reference: BPC-9053949931

2 May 2025

Archicraft Designs Limited
ref
53-54 Swanley Center



www.bpcventilation.com
www.bpcventilation.ie



028 2827 5150
00353 1526 7452



info@bpcventilation.com



Hi,

Thank you for your enquiry.

As the number 1 independent MVHR suppliers, we can provide you with the largest range of products to suit your project at a guaranteed low cost.

If you require an alternative option or have another preferred system in mind, please do not hesitate to contact BPC sales directly.

For further information or to proceed to the next stage, please contact our sales managers on the details above referencing the proposal number highlighted in **YELLOW**.

About Us

BPC Ventilation are leading designers & distributors of domestic and commercial ventilation solutions.

We offer supply & distribution to site and custom design services, ensuring optimal indoor air quality for residential and commercial spaces. You can trust BPC to deliver an outstanding service as well as superior systems.



IMPORTANT NOTES

- Proposal is supply only and is valid for 30 days
- Proposal price excludes VAT if applicable
- Proposal price is subject to final layout guide
- Delivery is free to UK & ROI mainland locations only
- Fire strategy has not been included unless specified
- Installation or Commissioning not included
- Amendments to proposed material list will effect system price
- Further info in our attached T&C's
- **Trade discount applied**
- **Price per dwelling**



Heat Recovery Ventilation (MVHR) Unit & Radial Ducting Kit

Option 1

MRXBOX95 AB-WM1

4 x 125mm Spigots
Up to 73m²



[View Online](#)

Technical Specification

| | |
|---|--------------------------------|
| Airflow rate (180m ³ /h max) | 120 m ³ /h/r @100Pa |
| Heat recovery efficiency | Up to 92% |
| Specific fan power (lowest) | 0.72 wls |
| Filtration | 2x G4 |
| Summer bypass | Yes |
| Warranty | 2 year |
| Unit mounted controller | No |
| Boost switch control | Yes (On/Off) |
| Interactive app control | No |
| Internal humidity control | No (room sensor) |
| Passive house certified | No |
| W-H-D (mm) / Kg | 603-468-288 / 16 Kg |

Property Specification

| | |
|--|--------------------|
| Area of property (m ²) | 40 m2 |
| Number of Floors | 1 |
| MVHR unit airflow rate requirement (l/s) | 21 l/s (75.6 m3/h) |
| Location of MVHR unit | Central |
| Exterior Venting Method | Wall |
| Between Floor Construction | Web |

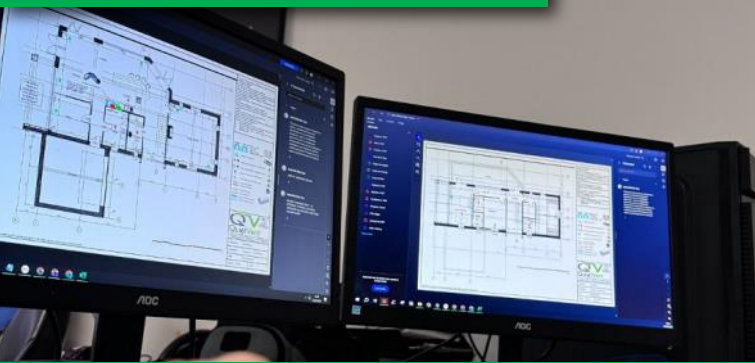
| Qty | Product Description |
|-------------------|--|
| 2 | 125mm - Quiet-Vent extract air valve PVC (white) |
| 2 | 125mm - Quiet-Vent supply air valve PVC (white) |
| 4 | 125mm - PVC Pipework x 2 meter |
| 3 | 125mm - PVC Pipe connector |
| 10 | 125mm - PVC 90° bends |
| 2 | PVC reducer 150mm (FM) - 125mm (M) |
| 2 | Quiet-Vent 125mm x 500mm - Flexi insulated sound attenuator |
| 4 | 25mm - 1m Foil Back Glass Fibre Insulation (1.2m x 1 m) |
| 2 | QV - 125mm - S/Steel cowl with bird mesh |
| 4 | Quiet-Vent 125mm Rubber flexible circular duct connector & 2 x clips |
| 1 | 75mm - Roll Silver Foil Tape |
| 1 | Builders Strap Roll (10 meters) |
| 1 | Sealant - Grey Duct |
| 1 | FS 75mm - 50 Metre Antibacterial Radial pipe (use QV rings) |
| 4 | Quiet-Vent 75mm Plenum |
| 2 | Quiet-Vent 75mm - Standard Sealing Ring (pack of 10) |
| 2 | Quiet-Vent 6 Pt Top Entry Distribution box -150 spigot (75mm) with 2 x blanking caps |
| 2 | 1Gang Momentary Boost Switch |
| 1 | Nuaire AB-WM1 MVHR Unit |
| 1 | Nuaire MVHR Condensate Drain Kit |

Cost for above including delivery* (excluding VAT) T&C's apply

£1230.37

Take Advantage of our Outstanding Services

Design Guides



Our dedicated in-house team can provide a bespoke layout guide in AutoCAD / PDF. This can include air flow rates and technical information.

Technical Support



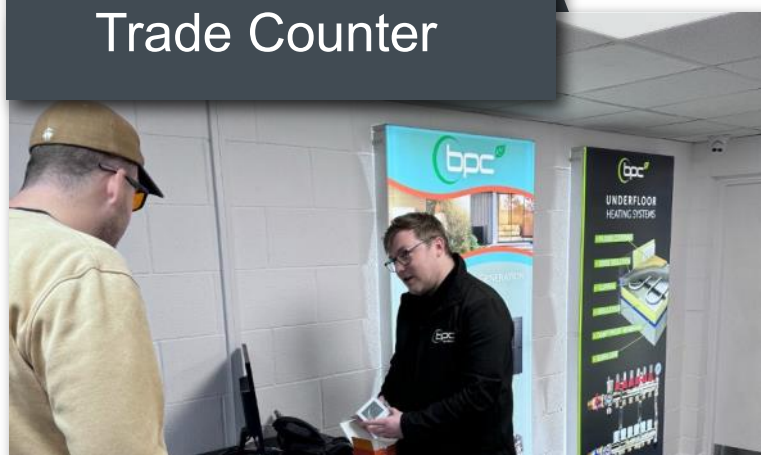
Our technical team can provide the best independent advice on ventilation solutions during or after your system installation is complete.

Supply & Distribution



BPC have 1000s of products in stock that are available for dispatch to any worldwide location from our distribution center.

Trade Counter



Visit our trade counter to explore a vast selection of items available at exclusive trade costs, providing you access to thousands of products.

Ventilation Training



We offer CPD courses and training in DIY servicing and installation, as well as certified ventilation courses accredited by NICEIC, and City & Guilds NZEB ventilation qualifications.

Trade Discount



If you install or sell ventilation equipment apply for a Trade or Wholesaler account that will provide further discount and dedicated advisor.



Rigid Insulated
PVC Ductwork



Sound
Attenuation Kit



75mm & 90mm
Distribution Boxes



Antibacterial &
Antistatic Ducting



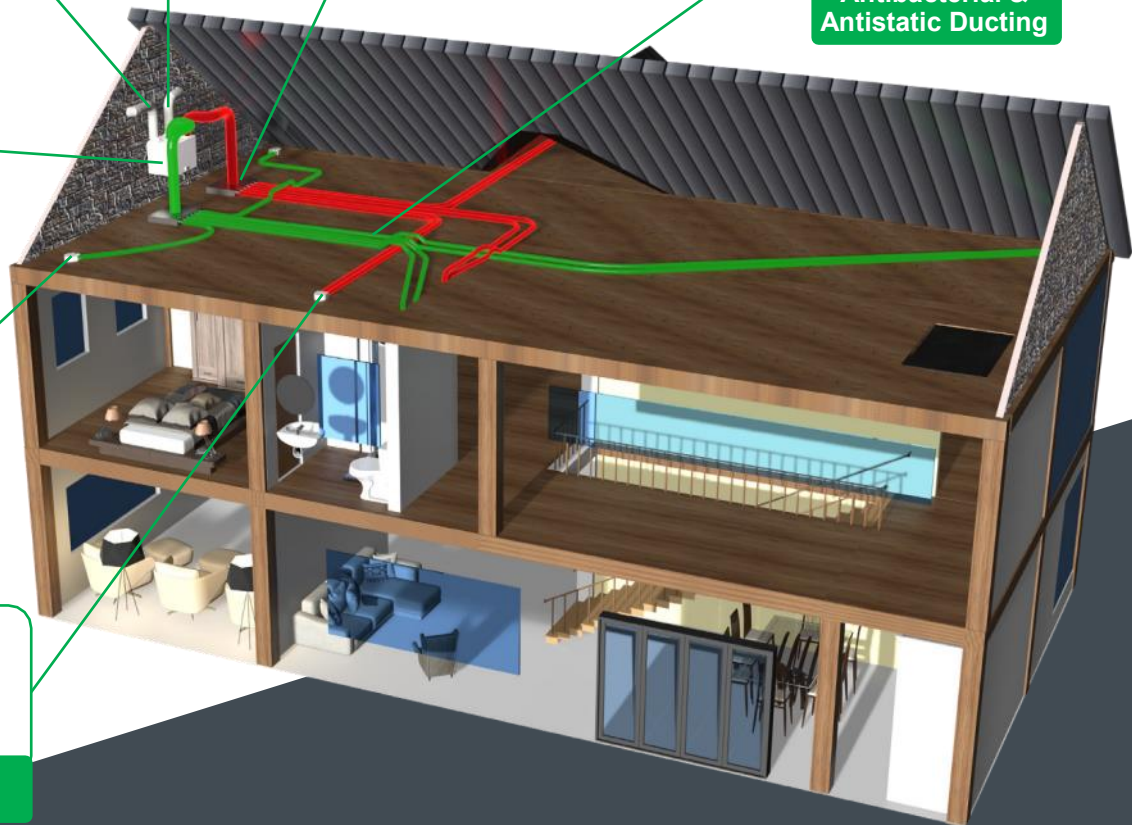
Largest MVHR
Range



Easy Install
Plenums



Supply &
Extract Valves



Superior Quality at an Affordable Cost

[View Online](#)



Alternative Ventilation Solutions

Demand Controlled Central Extract

A central extract unit (MEV) provides a quiet and powerful fan to extract from all the bathrooms and kitchen to one central unit.

The unit can be demand controlled by humidity sensors either inside the unit or in each room and can also have a speed adjustable motor or constant pressure.

To complement the MEV we recommend humidity controlled wall vents or the use of window trickle vents.

[View Online](#)

Single Room Heat recovery

A single room heat recovery unit is very popular for renovation projects or installations that have no access for a central system.

The near silent units have a Wi-Fi controller, can be paired together and programed to run in parallel or reverse, and have a built in humidity sensor.

[View Online](#)

Positive Input Ventilation

A Positive ventilation unit is a popular way to increase ventilation in renovation or rental projects.

The unit provides fresh air into the house from a central location (hallway) to combat condensation and mold.

Suitable for houses with an air permeability of 5 or higher.

[View Online](#)[View Online](#)

Central Vacuum Options

Top Quality Vacuum Units

- Powerful motors with 5 year warranty
- ABS casings for strength and durability
- 2 stage Hepa and Pro-Tecta filtration
- Cyclonic collection that requires no bags
- Carbon filter to motor
- Large collection bin
- Designed for easy DIY maintenance

Ducting & Inlet Valves

- All Sach Vac ducting is manufactured from virgin PVC to a high standard to prevent damage to pipes during construction
- The inlet and sweep valves can be supplied in metal or PVC and in various colors



Hide-A-Hose

With the new Hide-A-Hose central vacuum system you will never need to carry or store bulky vacuum hoses. Simply pull out the amount of hose you need from the inlet valve, connect your cleaning wand (with attachment) and begin vacuuming. When you have finished vacuuming, detach the cleaning wand from the hose, then the suction from the central vacuum power unit effortlessly retracts the hose into the ductwork hidden behind the wall. With the ability to store up to 15 meter of hose, one wall connection can cover up to 200 square meter vacuuming space.

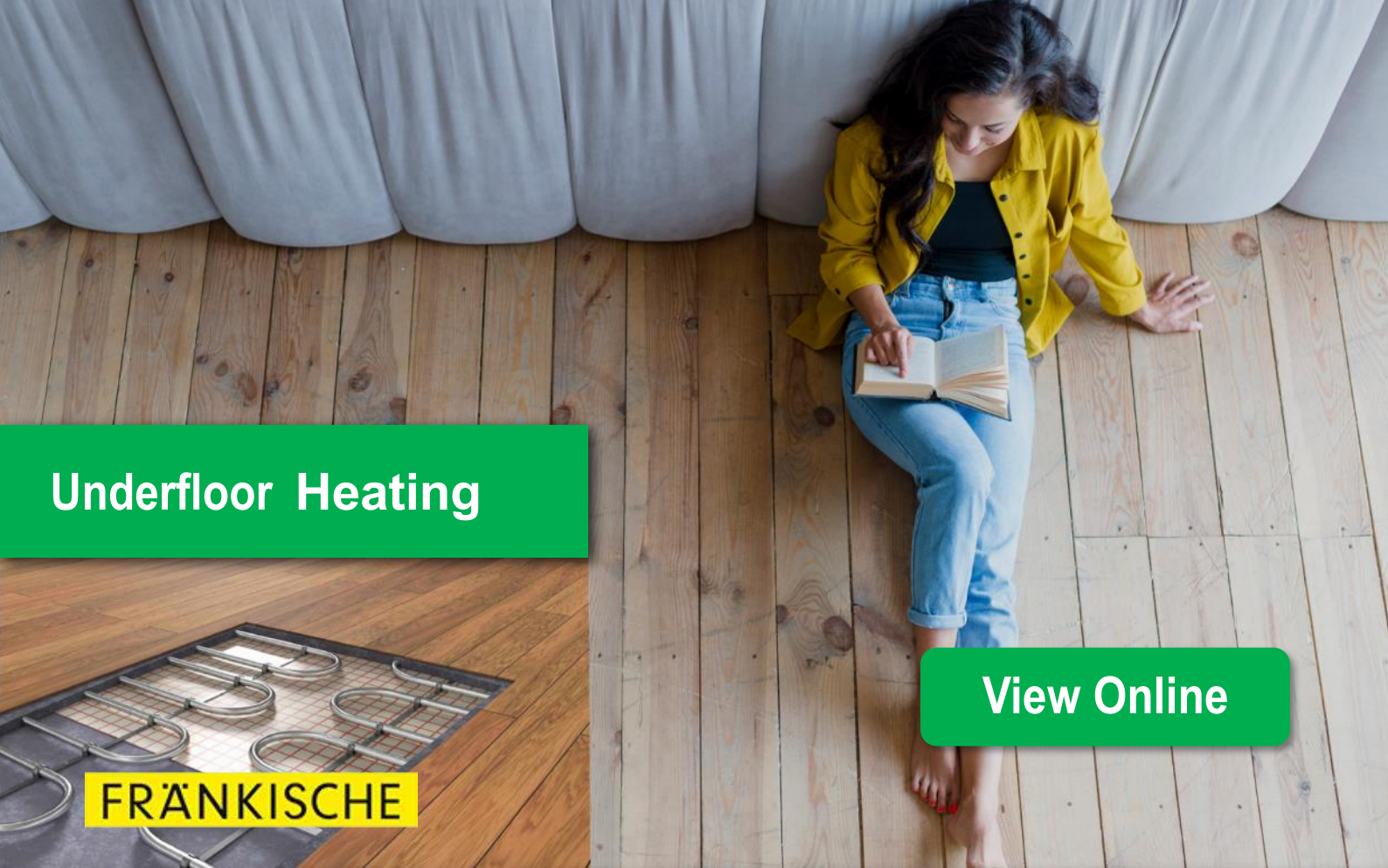
Standard

Simply insert the central vacuum hose into the wall fitting, switch on at the handle and quietly vacuum around the house. When you have finished, unplug the hose from the wall. The hose and wand can then be easily stored in a cupboard. Hoses are available in 8 and 10 meter lengths.

Accessories

- The quality electronically controlled hose has 360 rotation at both the handle and the wall vacuum point
- The vacuum power is controlled at the handle with either a on/off or variable speed switch
- All hoses and accessories are industrial grade to provide a long life service
- The Cleaning has the following items



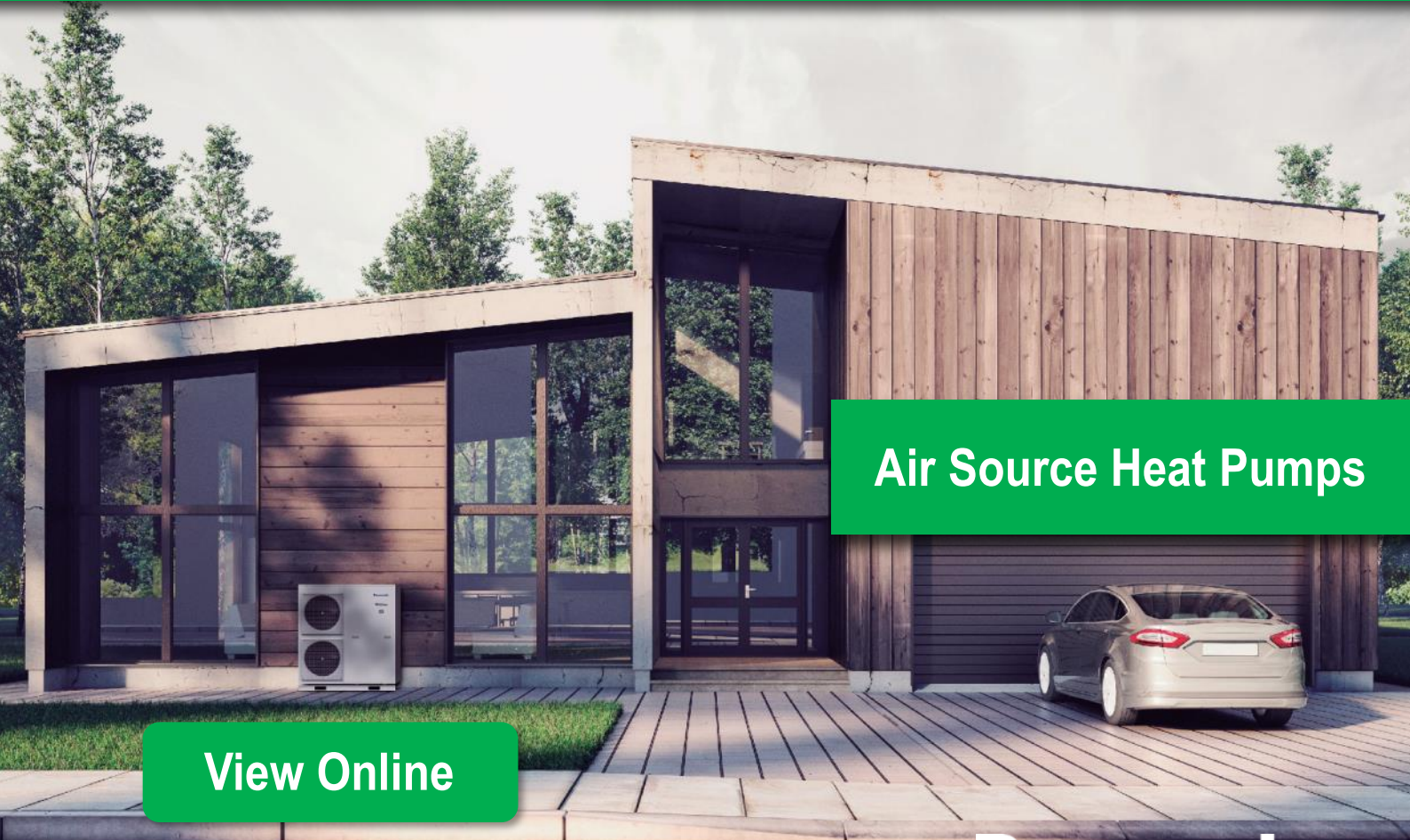


Underfloor Heating



[View Online](#)

Explore Our Range of Alternative Heating Solutions



Air Source Heat Pumps

[View Online](#)

Panasonic
heating & cooling solutions

Upgrade to our Architectural Air Valve Alternatives

LUFTOMET
— czech design —

Illuminating Air Valves

[View Online](#)

Hidden Ventilation Diffusers

- ✓ Painted any colour
- ✓ Universal for supply & extract
- ✓ Seamless stylish look
- ✓ Easy, fast, simple installation



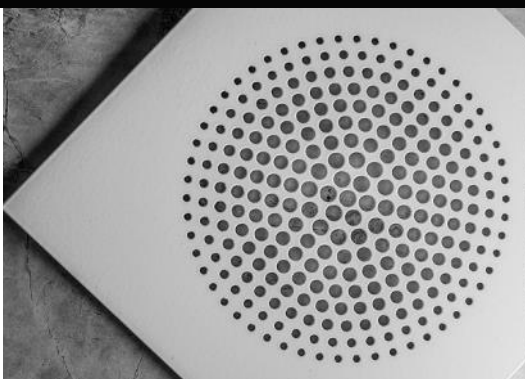
[View Online](#)

 **ERGOVENT**

starline®

Architectural Air Valves

FRÄNKISCHE



[View Online](#)

Additional System Upgrades

Electric/ Water Heater Options



[View Online](#)



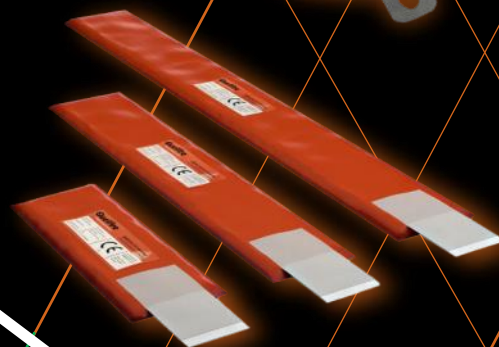
Fire Protection Options

[View Online](#)



QV
Quiet-Vent

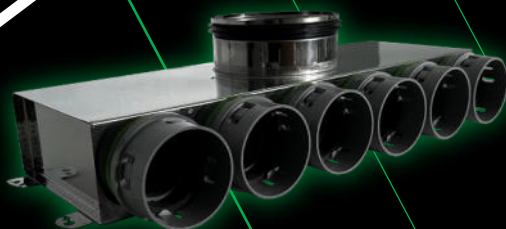
Quelfire
PROTECTING PEOPLE & PROPERTY



Brand New Range Quiet-Vent Pro Distribution Boxes

QV
Quiet-Vent

[View Online](#)



These conditions are to be considered in addition to our Terms and Conditions of business which are supplied separately.

Terms and Conditions

- Price is in pound sterling unless otherwise indicated.
- Prices exclude VAT.
- Payment is required before delivery unless an active trade account is in place and approved.
- Proposal valid for 30 days and we hold the right to withdraw proposal at any time.
- Total cost is for the provided quantity of listed materials estimated from provided plans (residential).
- If extra materials are required for any reason it will be at an additional cost.
- Any surplus goods returned will be refunded at the cost you paid, excluding carriage.
- If stock items are returned we will refund you excluding a restocking fee of 20% plus carriage charge.
- If non stock items are specially ordered we cannot accept returns.
- All non stock items ordered require a 50% non refundable deposit
- If ductwork & unit are purchased separately additional deliveries may be chargeable.

Control (residential)

- We recommend you install boost switches to the bathroom areas and install a controller (if available) in the utility room / kitchen area at eye level.
- We have numerous alternatives from temperature sensors to humidity sensors if preferred.

Control (commercial)

- Control systems are available for commercial MVHR units and if more than one option of control system is available for a particular unit we will quote the most cost effective option (unless specified).
- Controlled valves / fire dampers and sensors are available to supplement the unit operation.

Air Flow Rates

Flowrates in the UK are calculated @ $0.3 \times M^2$

We provide a layout guide with proposed air flow rates on request (note: this should only be used as a guide).

We hold no responsibility for overcoming unforeseen obstacles or structural penetrations.

Fire Prevention

We have not allowed for a fire strategy for this project (unless specified in your building design details) and we hold no responsibility for compliance. If you require fire dampers or valves to comply with any regulation they will be at an additional cost.

Heating

We provide numerous ways to temper the air using a MVHR system including duct heaters and Geothermal systems but we have not designed the system as a means of space heating. We take no responsibility that it can cover all space heating demand and recommend you gain specialist advice from a heating load engineer to determine the heating load required.

Delivery

- All deliveries are to yard; delivery is not included (unless specified).
- All MVHR kits are delivered by courier on pallets and adequate provisions should be made for receiving the delivery.
- If access is not suitable for large lorries it is important that you notify us before a system is agreed as any additional arrangements will have to be made and may incur an additional cost.
- We cannot track pallet deliveries but the courier will contact you to arrange approx. time of day, if possible.
- All parcels are tracked with Parcelforce / DPD and we can supply the shipment number to you on request.

*BPC Ventilation Ltd shall not be liable to any person for any loss or damage, whether in contract, tort (including negligence), breach of statutory duty, or otherwise, even if foreseeable, arising under or in connection with use of or reliance on any recommendation, introductions or information provided by BPC Ventilation Ltd in relation to a layout guide, system performance or third party suppliers.

