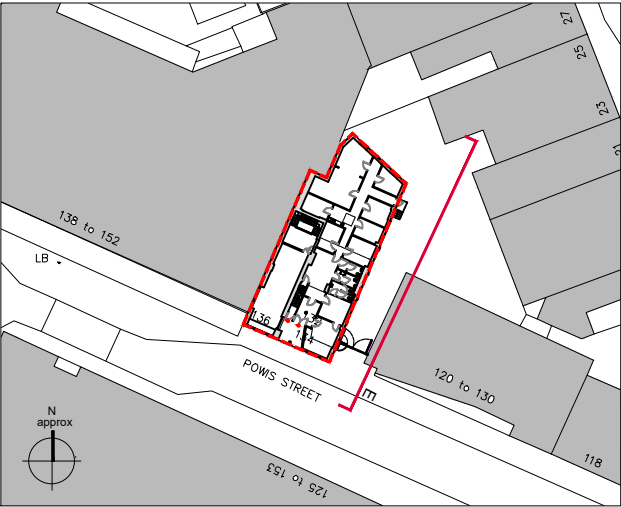


KEY PLAN



PROPOSED EAST ELEVATION (Right Side)
SCALE 1:100

PLANNING

antic	<p>NOTES :</p> <ul style="list-style-type: none">- All works to be carried out in accordance with current Building Regulations- All dimensions and levels to be checked and verified on site before commencing any work and notify the architect of any errors, omissions or discrepancies.- The drawings to be read in conjunction with contract documents, project working drawings, specification and all consultants/specialist and engineers drawings, details and specification.- This drawing is made on behalf of Antic London, 77 Malham Road, Forest Hill, London.- Do not scale from this drawing.	<div><div>012345678910</div><div><div></div><div></div><div></div><div></div><div></div><div></div><div></div><div></div><div></div><div></div></div><div>M 1:100[m]</div></div>	Issue Notes	Antic London 77 Malham Road, Forest Hill, London, SE23 1AH	Address : 132-136 Powis Street, London, SE18 6NL		DRAWN BY: AP, DP	
					Date: 14.04.2020	Drawing Drawing n0. Scale	Proposed East Elevation (Right) PW 200 EL E 1:100 @ A3	