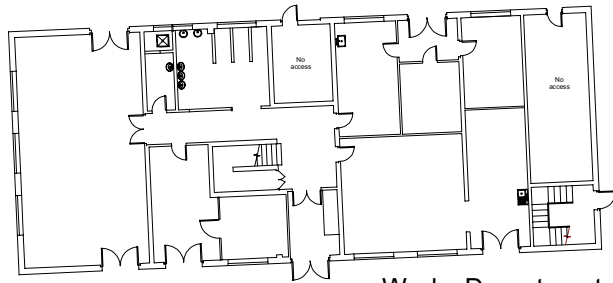


First floor

Works Department

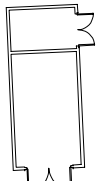


Shed



Ground floor

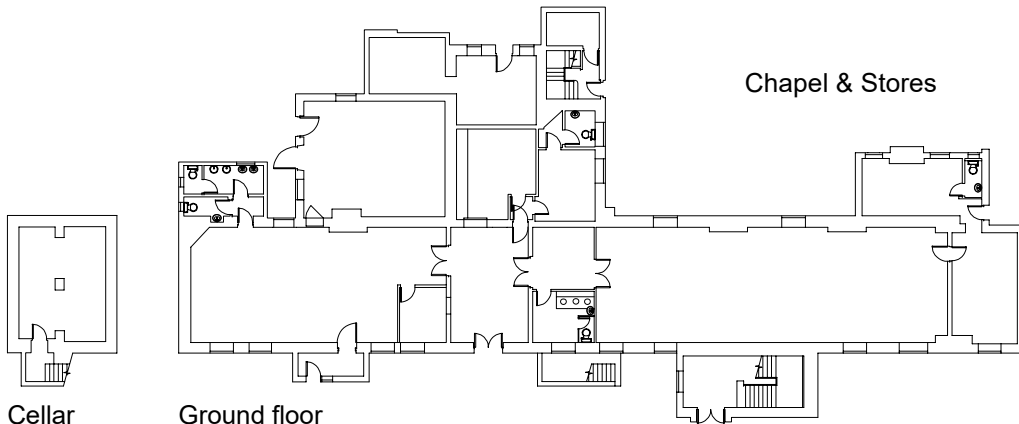
Works Department



Garage



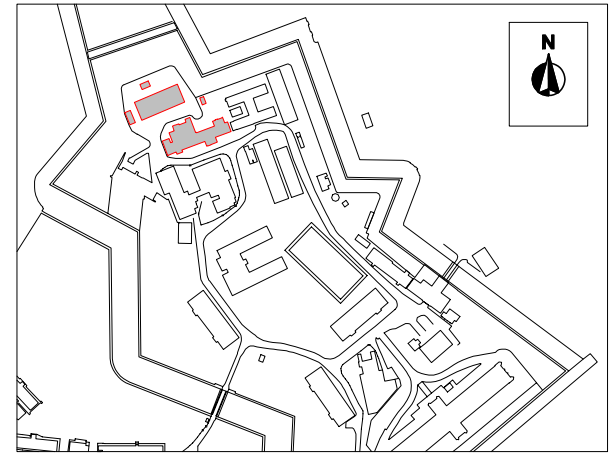
Fuel Store



Cellar

Ground floor

Chapel & Stores



Location plan

The Citadel, Dover

Gross internal area (approx.)

Chapel & Stores - 787.7 sq m (8478 sq ft)

Works Department - 741.0 sq m (7976 sq ft)

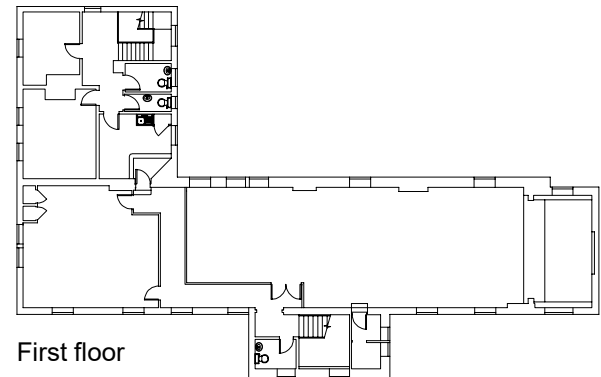
Garage - 28.8 sq m (310 sq ft)

Shed - 20.3 sq m (218 sq ft)

Fuel Store - 11.3 sq m (121 sq ft)

For identification only - Not to scale

© Trueplan (UK) Limited



First floor