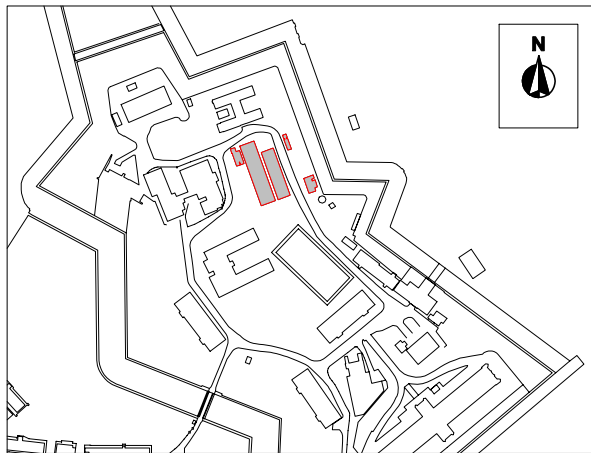
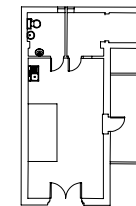


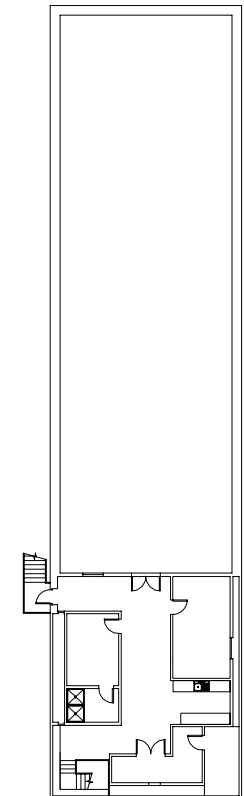
Cleaning Store



Location plan

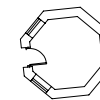


Internal Garden



Sports Building

First floor



Tower



Store Room

The Citadel, Dover

Gross internal area (approx.)

Ces Stores - 48.0 sq m (516 sq ft)

Sports Building - 373.8 sq m (4023 sq ft)

Gymnasium - 266.6 sq m (2869 sq ft)

Cleaning Store - 21.4 sq m (230 sq ft)

Internal Garden - 52.5 sq m (565 sq ft)

Tower - 11.6 sq m (124 sq ft)

Store Room - 9.1 sq m (97 sq ft)

For identification only - Not to scale

© Trueplan (UK) Limited

