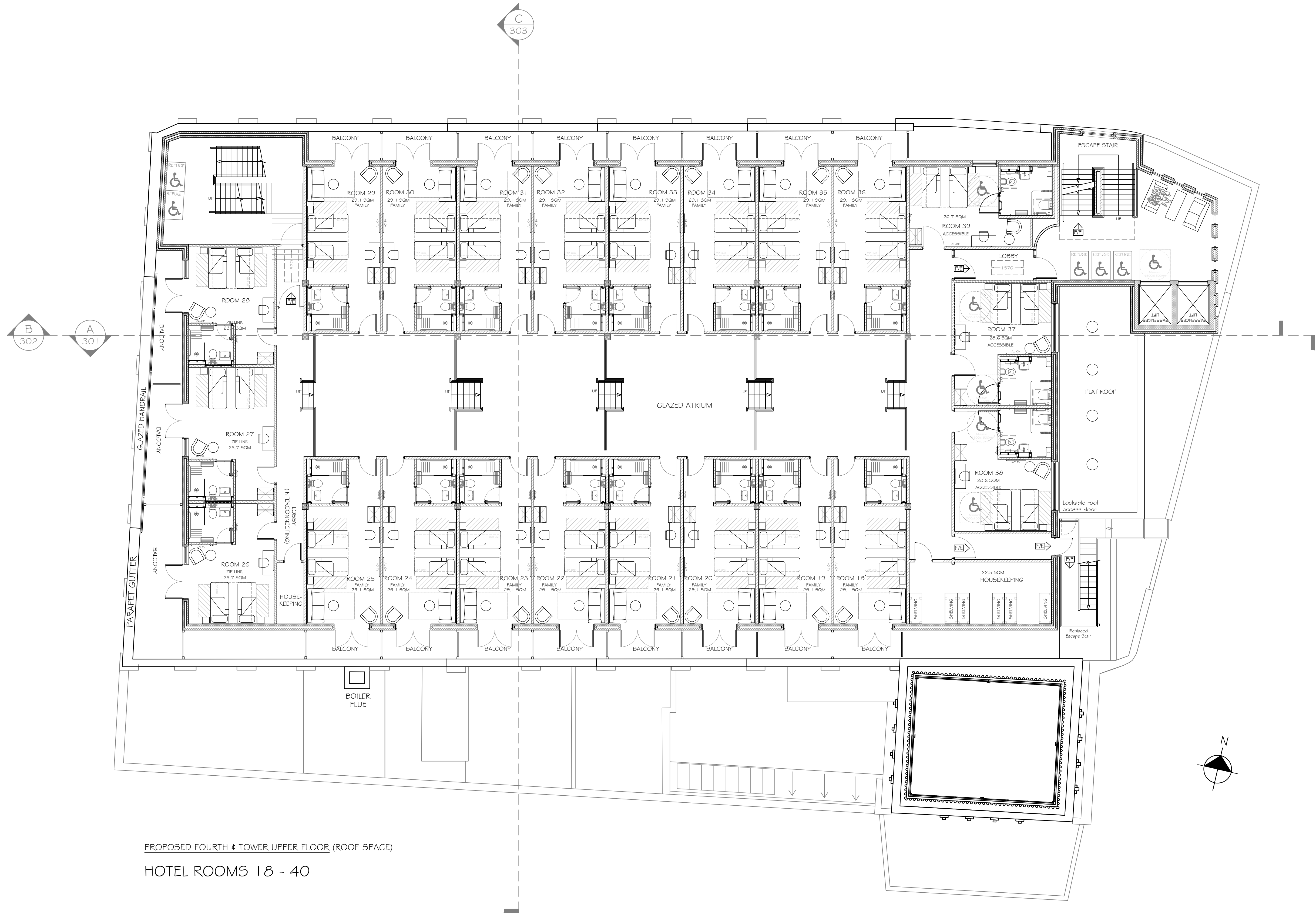
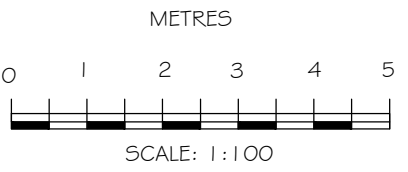


NOTE - Responsibility is not accepted for errors made by others in scaling from this drawing. All construction information should be taken from figured dimensions only



PROPOSED FOURTH & TOWER UPPER FLOOR (ROOF SPACE)

HOTEL ROOMS 18 - 40

| GROSS INTERNAL AREA | |
|---------------------|-------------|
| LOWER GROUND FLOOR: | 1 251.9 SQM |
| GROUND FLOOR: | 1 591.7 SQM |
| FIRST FLOOR: | 1 602.7 SQM |
| SECOND FLOOR: | 1 376.7 SQM |
| THIRD FLOOR: | 1 304.4 SQM |
| FOURTH FLOOR: | 1 068.2 SQM |
| FIFTH FLOOR: | 868.7 SQM |
| TOTAL | 9 064.3 SQM |

| | HOTEL ROOM BREAKDOWN | | | | | | | | TOTAL |
|------------|----------------------|-------------|-----------------|-------------------|--------------------------------|-------------|----------------------------|-------------|-------|
| | GROUND FLOOR | FIRST FLOOR | LOWER 2ND FLOOR | TOWER LOWER FLOOR | UPPER 2ND & TOWER MIDDLE FLOOR | THIRD FLOOR | FOURTH & TOWER UPPER FLOOR | FIFTH FLOOR | |
| DOUBLE | 0 | 2 | 0 | 1 | 3 | 0 | 0 | 4 | 10 |
| ZIP LINK | 0 | 0 | 0 | 1 | 6 | 0 | 3 | 17 | 27 |
| FAMILY | 0 | 3 | 1 | 0 | 0 | 0 | 16 | 0 | 20 |
| ACCESSIBLE | 0 | 0 | 0 | 0 | 0 | 0 | 3 | 0 | 3 |
| TOTAL | 0 | 5 | 1 | 2 | 9 | 0 | 22 | 21 | 60 |

1 in 20 (5%)

REVISIONS

-

kdp

Brooklyn Chambers, 11 Goring Road,
Worthing, West Sussex BN12 4AP
+44 (0)1903 496 999 www.kdpaine.co.uk

| | | | |
|------------|--|----------------------|---------------------|
| CLIENT | SLEEK DIRECT INTERNATIONAL LTD | | |
| PROJECT | THE STATE CINEMA GEORGE STREET, GRAYS, ESSEX RM17 6LY | | |
| DRAWING | PROPOSED FOURTH & TOWER UPPER FLOORS | | |
| SCALE | A1 / 1:100 | DATE FEB 25 | DRAWN AKS / TL |
| PROJECT No | 7839 | DRAWING No PL-170 | REVISION Draft 5 |

PRELIMINARY