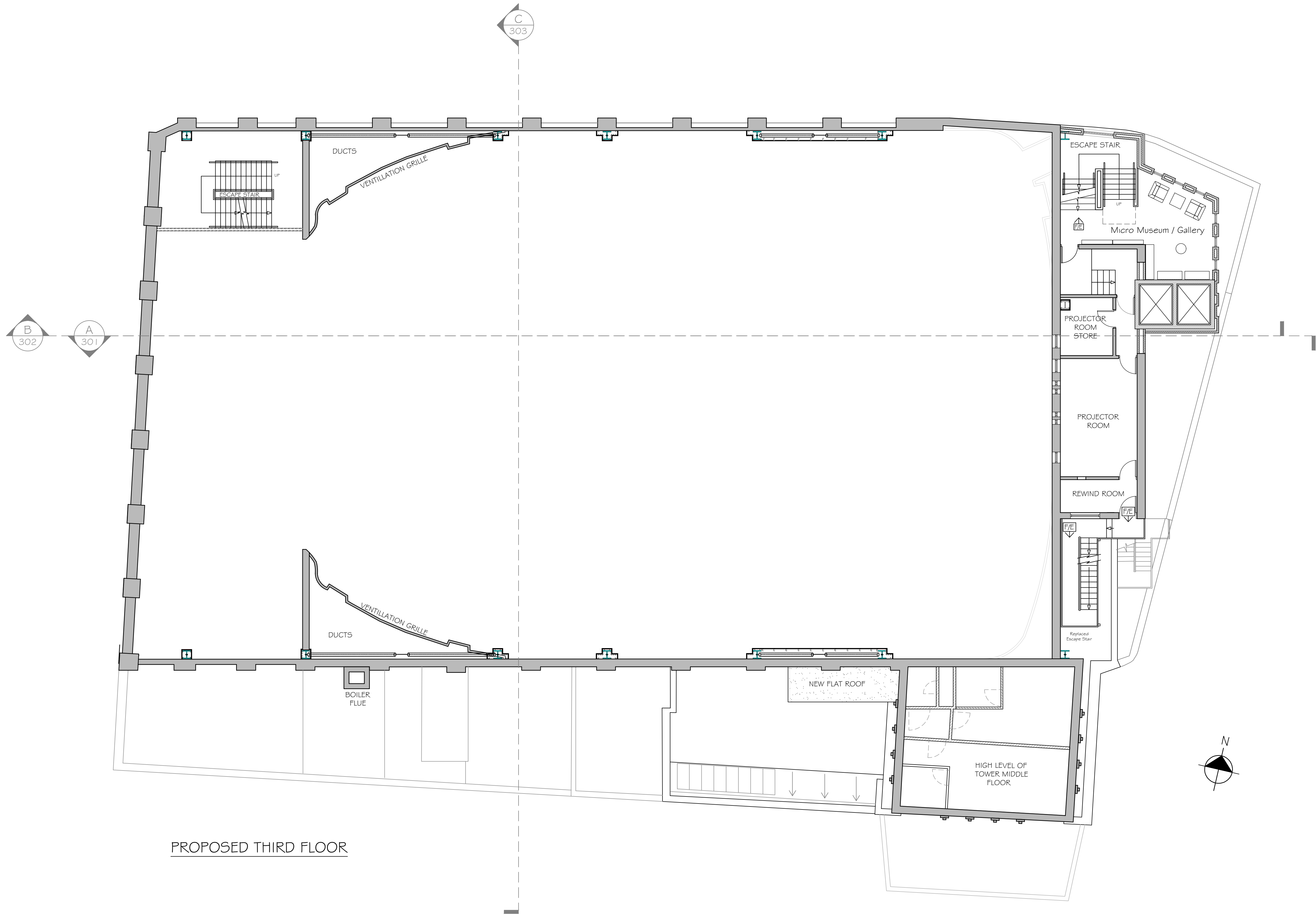
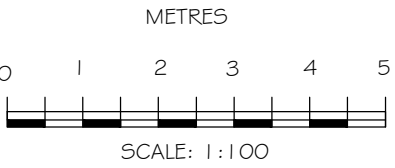


NOTE - Responsibility is not accepted for errors made by others in scaling from this drawing. All construction information should be taken from figured dimensions only



PROPOSED THIRD FLOOR

GROSS INTERNAL AREA		HOTEL ROOM BREAKDOWN									
LOWER GROUND FLOOR:	1 251.9 SQM										
GROUND FLOOR:	1 591.7 SQM										
FIRST FLOOR:	1 602.7 SQM										
SECOND FLOOR:	1 376.7 SQM										
THIRD FLOOR:	1 304.4 SQM										
FOURTH FLOOR:	1 068.2 SQM										
FIFTH FLOOR:	868.7 SQM										
TOTAL	9064.3 SQM										
			GROUND FLOOR	FIRST FLOOR	LOWER 2ND FLOOR	TOWER LOWER FLOOR	UPPER 2ND & TOWER MIDDLE FLOOR	THIRD FLOOR	FOURTH & TOWER UPPER FLOOR	FIFTH FLOOR	TOTAL
DOUBLE		0	2	0	1	3	0	0	4	10	
ZIP LINK		0	0	0	1	6	0	3	17	27	
FAMILY		0	3	1	0	0	0	16	0	20	
ACCESSIBLE		0	0	0	0	0	0	3	0	3	
TOTAL		0	5	1	2	9	0	22	21	60	

1 in 20 (5%)

REVISIONS

-

kdp  
a

Brooklyn Chambers, 11 Goring Road,  
Worthing, West Sussex BN12 4AP  
+44 (0)1903 496 999    www.kdpaine.co.uk

CLIENT	SLEEK DIRECT INTERNATIONAL LTD	
PROJECT	THE STATE CINEMA GEORGE STREET, GRAYS, ESSEX RM17 6LY	
DRAWING	PROPOSED THIRD FLOOR	

SCALE	DATE	DRAWN
A1 / 1:100	FEB 25	AKS / TL
PROJECT No	DRAWING No	REVISION
7839	PL-160	Draft 5

PRELIMINARY