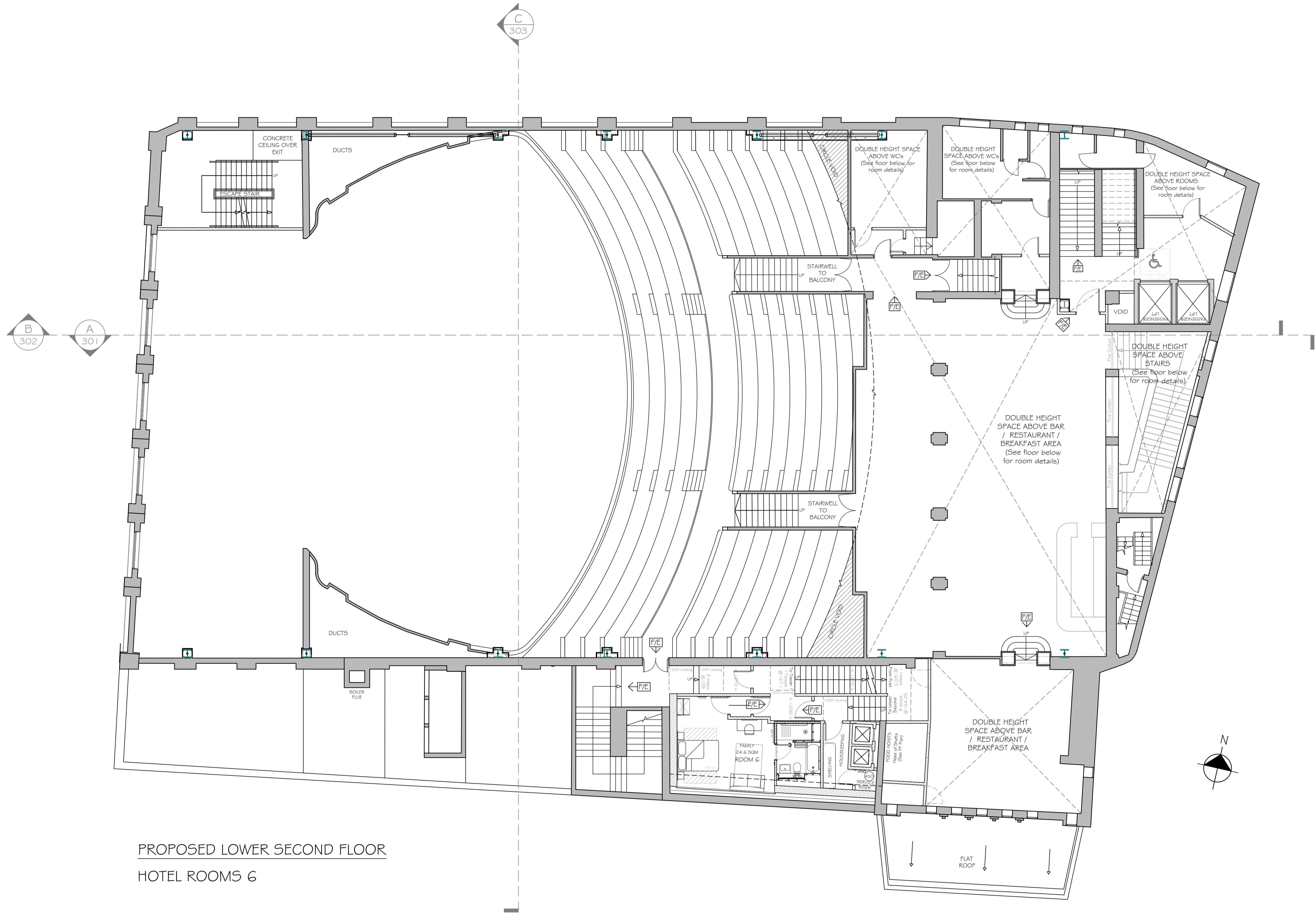
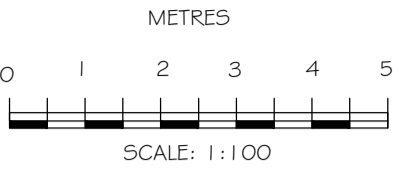


NOTE - Responsibility is not accepted for errors made by others in scaling from this drawing. All construction information should be taken from figured dimensions only



PROPOSED LOWER SECOND FLOOR  
HOTEL ROOMS 6

GROSS INTERNAL AREA		HOTEL ROOM BREAKDOWN									
LOWER GROUND FLOOR:	1 251.9 SQM										
GROUND FLOOR:	1 591.7 SQM										
FIRST FLOOR:	1 602.7 SQM										
SECOND FLOOR:	1 376.7 SQM										
THIRD FLOOR:	1 304.4 SQM										
FOURTH FLOOR:	1 068.2 SQM										
FIFTH FLOOR:	868.7 SQM										
TOTAL	9064.3 SQM										
			GROUND FLOOR	FIRST FLOOR	LOWER 2ND FLOOR	TOWER LOWER FLOOR	UPPER 2ND & TOWER MIDDLE FLOOR	THIRD FLOOR	FOURTH & TOWER UPPER FLOOR	FIFTH FLOOR	TOTAL
DOUBLE		0	2	0	1	3	0	0	4	10	
ZIP LINK		0	0	0	1	6	0	3	17	27	
FAMILY		0	3	1	0	0	0	16	0	20	
ACCESSIBLE		0	0	0	0	0	0	3	0	3	
TOTAL		0	5	1	2	9	0	22	21	60	

1 in 20 (5%)

REVISIONS

-

kdp

Brooklyn Chambers, 11 Goring Road,  
Worthing, West Sussex BN12 4AP  
+44 (0)1903 496 999 www.kdpaine.co.uk

CLIENT	SLEEK DIRECT INTERNATIONAL LTD		
PROJECT	THE STATE CINEMA GEORGE STREET, GRAYS, ESSEX RM17 6LY		
DRAWING	PROPOSED LOWER SECOND FLOOR		

SCALE	DATE	DRAWN
A1 / 1:100	FEB 25	AKS / TL
PROJECT No	DRAWING No	REVISION
7839	PL-130	Draft 5

PRELIMINARY