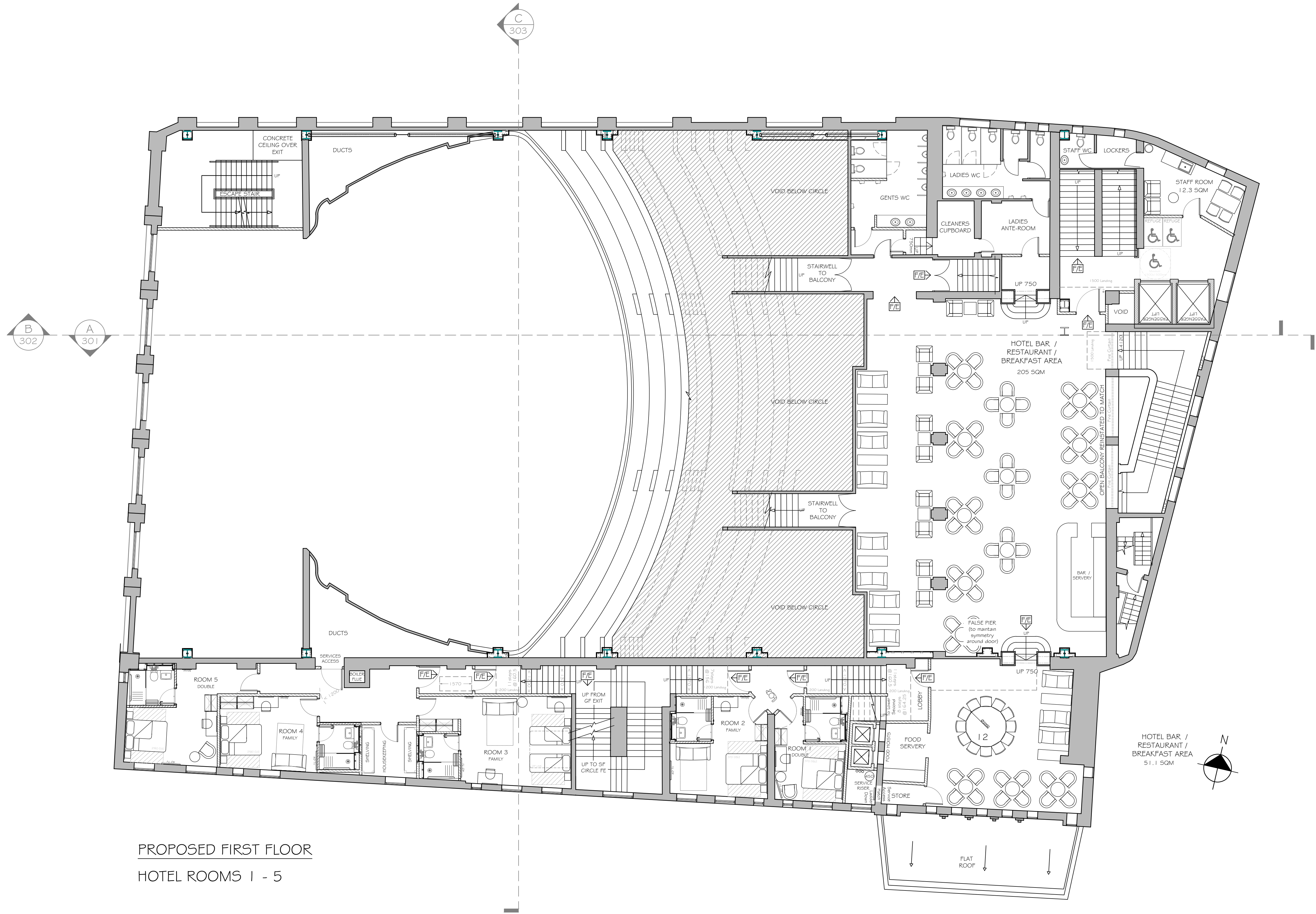
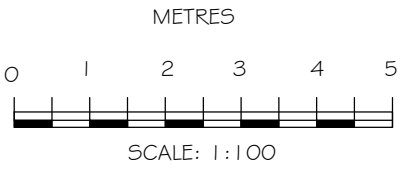


NOTE - Responsibility is not accepted for errors made by others in scaling from this drawing. All construction information should be taken from figured dimensions only



PROPOSED FIRST FLOOR
HOTEL ROOMS 1 - 5

GROSS INTERNAL AREA		HOTEL ROOM BREAKDOWN									
LOWER GROUND FLOOR:	1 251.9 SQM		GROUND FLOOR	FIRST FLOOR	LOWER 2ND FLOOR	TOWER LOWER FLOOR	UPPER 2ND & TOWER MIDDLE FLOOR	THIRD FLOOR	FOURTH & TOWER UPPER FLOOR	FIFTH FLOOR	TOTAL
GROUND FLOOR:	1 591.7 SQM	DOUBLE	0	2	0	1	3	0	0	4	10
FIRST FLOOR:	1 602.7 SQM	ZIP LINK	0	0	0	1	6	0	3	17	27
SECOND FLOOR:	1 376.7 SQM	FAMILY	0	3	1	0	0	0	16	0	20
THIRD FLOOR:	1 304.4 SQM	ACCESSIBLE	0	0	0	0	0	0	3	0	3
FOURTH FLOOR:	1 068.2 SQM	TOTAL	0	5	1	2	9	0	22	21	60
FIFTH FLOOR:	868.7 SQM										
TOTAL	9 064.3 SQM										

1 in 20 (5%)

REVISIONS

-

kdp

Brooklyn Chambers, 11 Goring Road,
Worthing, West Sussex BN12 4AP
+44 (0)1903 496 999 www.kdpaine.co.uk

CLIENT SLEEK DIRECT INTERNATIONAL LTD

PROJECT THE STATE CINEMA
GEORGE STREET, GRAYS, ESSEX RM17 6LY

DRAWING PROPOSED FIRST FLOOR

SCALE	DATE	DRAWN
A1 / 1:100	FEB 25	AKS / TL
PROJECT No	DRAWING No	REVISION
7839	PL-120	Draft 5

PRELIMINARY